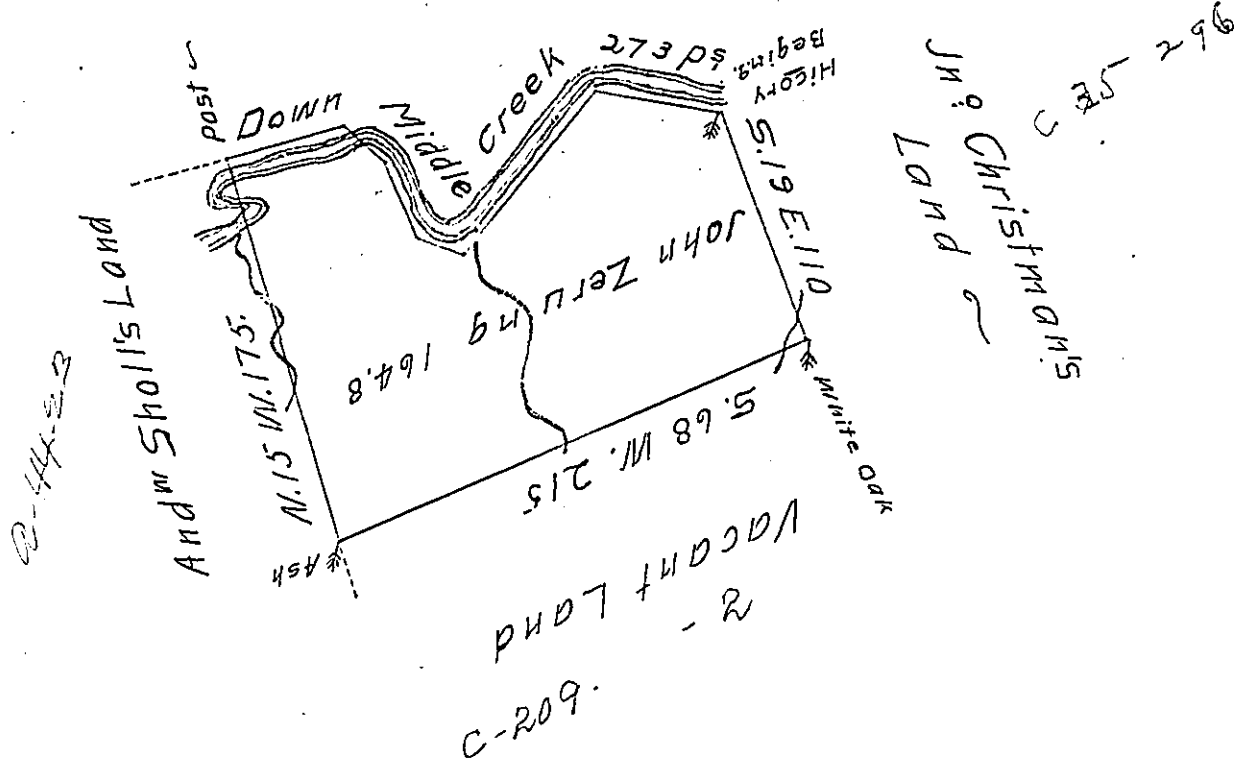


FORM NO 1.

Cours and Distances
down Middle Creek

- N. 77 E. 45 ~
- S. 46 E. 25 ~
- S. 22 E. 34 ~
- S. 71 E. 19 ~
- N. 40 E. 92 ~
- S. 80 E. 58 ~
- 273 ~



The Draught of a Tract of Land called _____ situate on the South side of Middle Creek in the County of Cumberland containing One Hundred Sixty Four Acres 147 Perches with the usual Allowance of Six Acres & Cent: for Roads. Survey'd the 11th day of October A.D. 1766 In Pursuance of a Warrant from the Honble Proprietaries to John Zerung Bearing Date at Philad^a the thirty first day of October Anno Dom: 1765

W^m Maclay D.S.

To John Lukens Esq^r S.G. }
of Pennsylvania ~ }

now Northumberland County.

IN TESTIMONY that the above is a copy of the original remaining on file in the Department of Internal Affairs of Pennsylvania, made conformably to an Act of Assembly approved the 16th day of February, 1833, I have hereunto set my Hand and caused the Seal of said Department to be affixed at Harrisburg, this 18th day of Sept. 1907

Henry Howell
Secretary of Internal Affairs.